

NATURAL LIGHT ENERGY SYSTEMS, dba KENNEDY SKYLIGHTS

MODEL "CM" CURB MOUNTED POLYCARBONATE SKYLIGHT - NI

INSTALLATION ANCHORAGE DETAILS

GENERAL NOTES:

1. THE PRODUCT ANCHORAGE SHOWN HEREIN IS DESIGNED TO COMPLY WITH THE REQUIREMENTS OF THE CURRENT EDITION OF THE FLORIDA BUILDING CODE - BUILDING (FBC) AND RESIDENTIAL (FRC) VOLUMES EXCLUDING THE HIGH VELOCITY HURRICANE ZONE (HVHZ) AT THE DESIGN PRESSURE(S) STATED HEREIN.
2. THE PRODUCT DETAILS CONTAINED HEREIN ARE BASED UPON SIGNED AND SEALED TEST REPORT NO. NCTL-210-3042-2, 3 AND ASSOCIATED LABORATORY STAMPED DRAWINGS.
3. THE SKYLIGHT HAS BEEN TESTED IN ACCORDANCE WITH THE REQUIREMENTS OF THE CURRENT EDITION OF THE FLORIDA BUILDING CODE - BUILDING (FBC) AND RESIDENTIAL (FRC) VOLUMES EXCLUDING THE HIGH VELOCITY HURRICANE ZONE (HVHZ) AND DOCUMENTED IN SIGNED AND SEALED TEST REPORT NO. NCTL-210-3042-2, 3 AND ASSOCIATED LABORATORY STAMPED DRAWINGS.
4. POLYCARBONATE GLAZING MEETS THE REQUIREMENTS OF THE CURRENT EDITION OF THE FLORIDA BUILDING CODE - BUILDING (FBC) AND RESIDENTIAL (FRC) VOLUMES. SEE SHEET 4 FOR GLAZING DETAIL.
5. ADEQUACY OF THE EXISTING STRUCTURAL FRAMING AS A MAIN WIND FORCE RESISTING SYSTEM CAPABLE OF WITHSTANDING AND TRANSFERRING APPLIED PRODUCT LOADS TO THE STRUCTURE IS THE RESPONSIBILITY OF THE ENGINEER OR ARCHITECT OF RECORD.
6. SITE CONDITIONS THAT DEVIATE FROM THE DETAILS OF THIS DRAWING REQUIRE FURTHER ENGINEERING ANALYSIS BY A LICENSED PROFESSIONAL ENGINEER OR REGISTERED ARCHITECT.
7. IN NON-HVHZ AREAS WHERE WINDBORNE DEBRIS PROTECTION REQUIREMENTS EXIST, USE OF AN IMPACT PROTECTIVE SYSTEM COMPLYING WITH THE FBC REQUIREMENTS FOR WINDBORNE DEBRIS REGIONS IS REQUIRED FOR THE PRODUCT(S) HEREIN.
8. WHEN APPLICABLE, DISSIMILAR METALS INCLUDING FASTENERS THAT MAY COME INTO CONTACT WITH ALUMINUM SKYLIGHT FRAMING SHALL HAVE BEEN PROTECTED IN A MANNER TO PREVENT GALVANIC CORROSION. FASTENERS SHALL BE MADE OF CORROSION RESISTANT METAL OR HAVE A CORROSION RESISTANT COATING.
9. CURB CONSTRUCTION AND MOUNTING DETAILS:
 - 9.1. A CURB SUPPLIED BY OTHERS CONSTRUCTED AND MOUNTED IN ACCORDANCE WITH THE REQUIREMENTS OF THE CURRENT EDITION OF THE FLORIDA BUILDING CODE - BUILDING (FBC) AND RESIDENTIAL (FRC) VOLUMES FOR THE TYPE OF CONSTRUCTION CLASSIFICATION WHERE THE SKYLIGHT IS TO BE INSTALLED IS ALLOWED.
 - 9.2. A CURB SUPPLIED BY KENNEDY SKYLIGHTS CONSTRUCTED AND MOUNTED IN ACCORDANCE WITH THE REQUIREMENTS OF THE CURRENT EDITION OF THE FLORIDA BUILDING CODE - BUILDING (FBC) AND RESIDENTIAL (FRC) VOLUMES FOR THE TYPE OF CONSTRUCTION CLASSIFICATION WHERE THE SKYLIGHT IS TO BE INSTALLED IS APPROVED.
 - 9.3. DOME-SHAPED SKYLIGHTS SHALL RISE ABOVE THE MOUNTING FLANGE A MINIMUM DISTANCE EQUAL TO 10 PERCENT OF THE MAXIMUM SPAN OF THE DOME BUT NOT LESS THAN 3 INCHES.
 - 9.4. INTEGRATION WITH THE ROOF ASSEMBLY SHALL BE IN ACCORDANCE WITH CHAPTER 15 OF THE CURRENT EDITION OF THE FBC AND CHAPTER 9 OF THE CURRENT EDITION OF THE FRC.
 - 9.5. ADDITIONAL INSTALLATION DETAILING AND ENGINEERED INSTALLATION EVALUATION BY A LICENSED DESIGN PROFESSIONAL WILL BE REQUIRED FOR SUBMITTAL IN ADDITION TO THIS PRODUCT EVALUATION DOCUMENT..

DESIGN PRESSURE RATING (PSF)	IMPACT RATING
+60.0/-60.0	NONE

TABLE OF CONTENT	
SHEET	DESCRIPTION
1	GENERAL NOTES AND DESIGN PRESSURE RATING
2	INSTALLATION NOTES AND ANCHOR SCHEDULE
3	ELEVATION AND ANCHORING LAYOUT
4	INSTALLATIOIN CROSS SECTION AND GLAZING DETAIL
5	BILL OF MATERIALS AND COMPONENTS

PROJECT NUMBER: 423-0504	
C	Update to 8th Edition (2023) FBC 10/16/23 RJA
B	Update to 6th Edition (2017) FBC 12/6/17 RJA
A	Update to 5th Edition (2014) FBC 7/15/15 RJA
REV	DESCRIPTION DATE BY

NATURAL LIGHT ENERGY SYSTEMS, dba KENNEDY SKYLIGHTS
5294 TOWER WAY
SANFORD, FL 32773

DATE: 05/08/12
DRAWING NO: KENN0007
SHEET: 1 OF 5

TITLE: MODEL "CM" CURB MOUNTED POLYCARB. SKYLIGHT
NON IMPACT
GENERAL AND INSTALLATION NOTE

DRAWN BY: TJH
SCALE: N.T.S.
REV: C

PTE
PTC PRODUCT DESIGN GROUP, LLC
PO BOX 520775
LONGWOOD, FLORIDA 32752
Phone: 321.690.1789
Fax: 321.690.1789
Email: info@ptc-corp.com
FBPE CA. NO. 23535

Robert J. Amoruso, P.E.
FL P.E. No. 49752

INSTALLATION NOTES:

1. INSTALL ALUMINUM RING AND POLYCARBONATE DOME INTO CURB USING #10 x 1 3/4" SELF-DRILLING/SELF-TAPPING SCREWS. SPACE ANCHORS 4" MAX. FROM ENDS AND 22" MAX. O.C. THEREAFTER, AS SHOWN ON ANCHORING LAYOUT SHEET 3.
 - 1.1. THREE (3) ANCHORS REQUIRED PER SIDE AS SHOWN ON ANCHORING LAYOUT SHEET 3.
 - 1.2. CURB WOOD SPECIFIC GRAVITY OF 0.55 MINIMUM.
2. APPLY ALL SEALANTS ACCORDING TO MANUFACTURERS INSTRUCTIONS.
3. PRODUCT ANCHORS SHALL BE AS DESIGNATED AND LOCATED AS SHOWN ON THE INSTALLATION DRAWINGS. ANCHOR EMBEDMENT AND EDGE DISTANCE EXCLUDE WALL FINISHES INCLUDING, BUT NOT LIMITED TO SHEATHING, UNDERLAYMENT AND SHINGLES.
4. INSTALLATION ANCHORS AND ASSOCIATED HARDWARE MUST BE MADE OF CORROSION RESISTANT MATERIAL OR HAVE A CORROSION RESISTANT COATING. DISSIMILAR METALS OR MATERIALS IN CONTACT WITH PRESSURE TREATED WOOD MUST BE PROTECTED TO PREVENT REACTION.
5. INSTALLATION ANCHORS SHALL BE INSTALLED IN ACCORDANCE WITH ANCHOR MANUFACTURER'S INSTALLATION INSTRUCTIONS. ANCHORS SHALL NOT BE USED IN SUBSTRATES WITH STRENGTHS LESS THAN THE MINIMUM STRENGTH SPECIFIED IN THE INSTALLATION ANCHOR SCHEDULE ON THIS SHEET.

INSTALLATION ANCHOR SCHEDULE								
ASSEMBLY	SUBSTRATE TYPE	HEAD TYPE	SIZE	MANUFACTURER AND/OR SPECIFICATION	MIN. EMBEDMENT (IN)	MIN. EDGE DISTANCE (IN)	MIN. SPACING (IN)	CAPACITIES BASED ON
ROOF OR CURB	CONCRETE	HEX HEAD	3/16"	ITW TAPCON (3)	1 1/2	1 1/8	2 1/2	MIN. 2500 PSI CONCRETE BUT NOT LESS THAN THAT REQUIRED BY BUILDING CODE
				Elco Ultracon	1 3/8	1	3 3/8	MIN. 2500 PSI CONCRETE BUT NOT LESS THAN THAT REQUIRED BY BUILDING CODE
CURB	MASONRY (BLOCK/CMU)	HEX HEAD	3/16"	ITW TAPCON (3)	1	2	2 1/2	STRENGTH CONFORMANCE TO ASTM C-90, MEDIUM WEIGHT DENSITY > 117 PCF
				Elco Ultracon	1 1/4	1	3 3/8	STRENGTH CONFORMANCE TO ASTM C-90, MEDIUM WEIGHT
ROOF	SOLID-SAWN LUMBER (2)	HEX, PAN OR TRUSS HEAD	NO. 8	ANSI B18.6.1 (WOOD SCREW) ASME B18.6.4 (SELF-DRILLING/SELF-TAPPING SCREW)	7/8	5/16	13/16	WOOD WITH A MINIMUM SPECIFIC GRAVITY OF 0.55
CURB	SOLID-SAWN LUMBER (1)	HEX, PAN OR TRUSS HEAD	NO. 10	ASME B18.6.4 (SELF-DRILLING/SELF-TAPPING SCREW)	1 1/4	3/4	3/4	WOOD WITH A MINIMUM SPECIFIC GRAVITY OF 0.55
ROOF	ALUMINUM OR STEEL, 1/8" MIN. WALL THICKNESS	HEX, PAN OR TRUSS HEAD	NO. 8	ASME B18.6.4 (SELF-DRILLING/SELF-TAPPING SCREW)	PROTRUDING MIN. 3 THREADS PAST INTERIOR OF SUBSTRATE	1/2	1/2	ULTIMATE STRENGTH (Fu) OF 22,000 PSI
ROOF	PLYWOOD or OSB	HEX, PAN OR TRUSS HEAD	NO. 8	ASME B18.6.4 (TYPE AB TAPPING SCREW)	SCREW THREADS SHALL PROTRUDE A MINIMUM OF 1/4" FROM THE UNDERSIDE OF THE ROOF SHEATHING	1/2	1/2	7/16" THICK PLYWOOD - SPECIES GROUP 1 OR 2 (APA VOLUNTARY PRODUCT STANDARD PS 1) MINIMUM OR
ROOF	PLYWOOD or OSB	1/4" DIA. ROUND HEAD RING-SHANK NAIL	0.099" DIA. MIN.	RING-SHANK NAIL	NAIL SHANK SHALL PROTRUDE A MINIMUM OF 1/4" FROM THE UNDERSIDE OF THE ROOF SHEATHING	1/2	1/2	7/16" - SHEATHING GRADE (APA VOLUNTARY PRODUCT STANDARD PS 2) MINIMUM

NOTES:

- 1) FOR NO. 10 WOOD AND TAPPING SCREWS IF SPLITTING IS A CONCERN, DRILL 0.112" (DRILL SIZE 34) PILOT HOLE FOR WOOD FRAME INSTALLATION.
- 2) FOR NO. 8 WOOD AND TAPPING SCREWS IF SPLITTING IS A CONCERN, DRILL 0.082" (DRILL SIZE 45) PILOT HOLE FOR WOOD FRAME INSTALLATION.
- 3) WHEN ITW TAPCONS ARE USED FOR CONCRETE/MASONRY INSTALLATION, THEY SHALL BE THE ADVANCED THREADFORM TECHNOLOGY TYPE.

PROJECT NUMBER: 423-0504			RJA	BY
			RJA	DATE
		Update to 8th Edition (2023) FBC	10/16/23	RJA
		Update to 6th Edition (2017) FBC	12/6/17	RJA
		Update to 5th Edition (2014) FBC	7/15/15	RJA
				REV
				DESCRIPTION

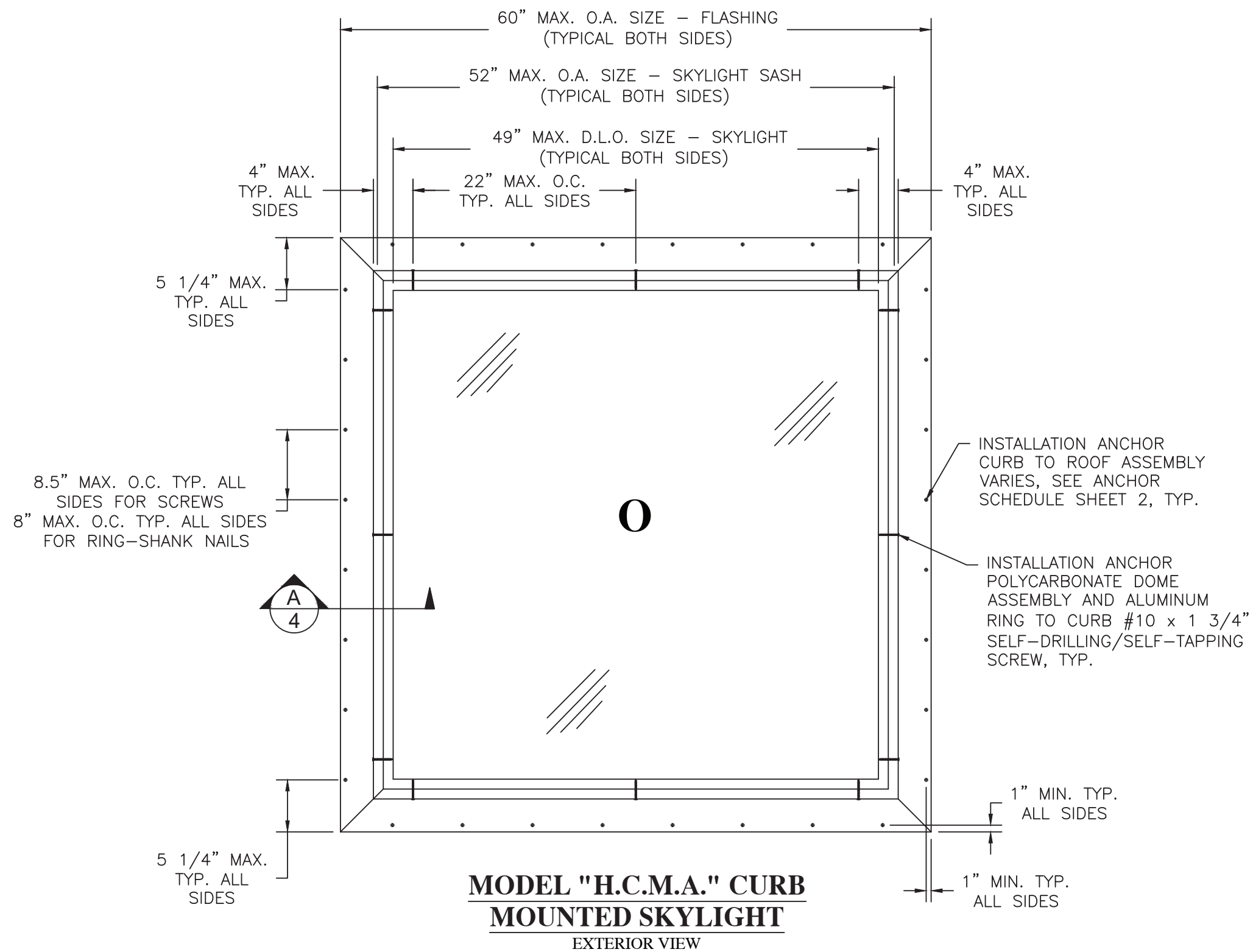
NATURAL LIGHT ENERGY SYSTEMS, dba KENNEDY SKYLIGHTS
 5294 TOWER WAY
 SANFORD, FL 32773

TITLE: MODEL "CM" CURB MOUNTED POLYCARB. SKYLIGHT NON IMPACT
 INSTALLATION NOTES AND ANCHOR SCHEDULE

PREPARED BY: TUJ
 DATE: 05/08/12
 SCALE: N.T.S.
 DRAWING NO: KENN007
 SHEET: 2 OF 5

PTC PRODUCT DESIGN GROUP, LLC
 PO BOX 520776
 LONGWOOD, FLORIDA 32752
 Phone: 321.690.1788
 Fax: 321.690.1789
 Email: info@ptc-corp.com
 FBPE CA. NO. 23535

Robert J. Amoruso, P.E.
 FL P.E. No. 49752



PROJECT NUMBER: 423-0504

C	Update to 8th Edition (2023) FBC	10/16/23	RJA		
B	Update to 6th Edition (2017) FBC	12/6/17	RJA		
A	Update to 5th Edition (2014) FBC	7/15/15	RJA		
REV	DESCRIPTION	DATE	BY		

NATURAL LIGHT ENERGY SYSTEMS, dba KENNEDY SKYLIGHTS
5294 TOWER WAY
SANFORD, FL 32773

TITLE: MODEL "CM" CURB MOUNTED POLYCARB. SKYLIGHT
NON IMPACT
ELEVATION AND ANCHORING LAYOUT

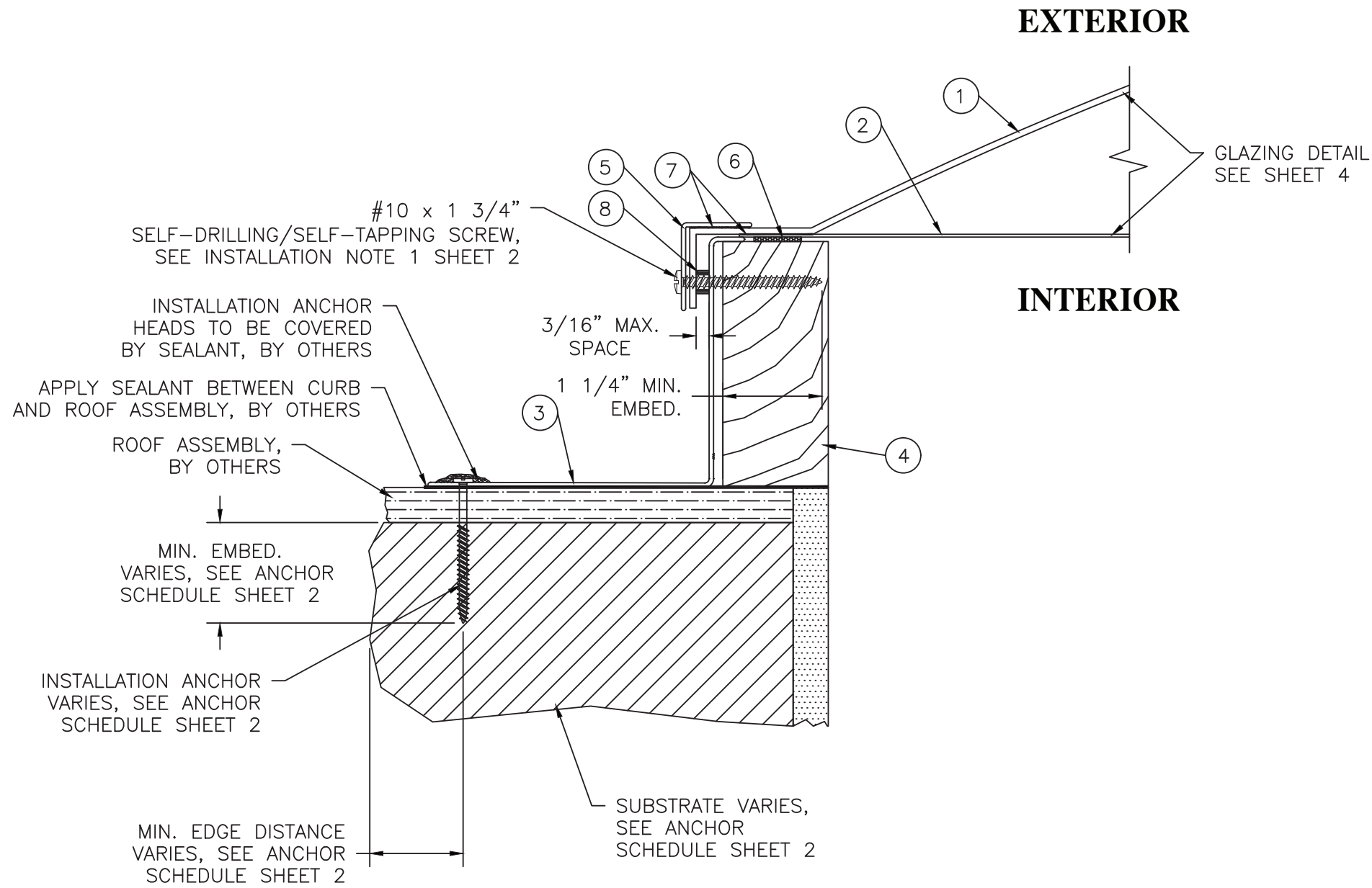
PREPARED BY: PTC PRODUCT DESIGN GROUP, LLC
PO BOX 520776
LONGWOOD, FLORIDA 32752
FBPE CA. NO. 23535

DATE: 05/08/12
DRAWING NO.: KENN0007
SHEET: 3 OF 5

DRAWN BY: TJH
SCALE: N.T.S.
REV: C

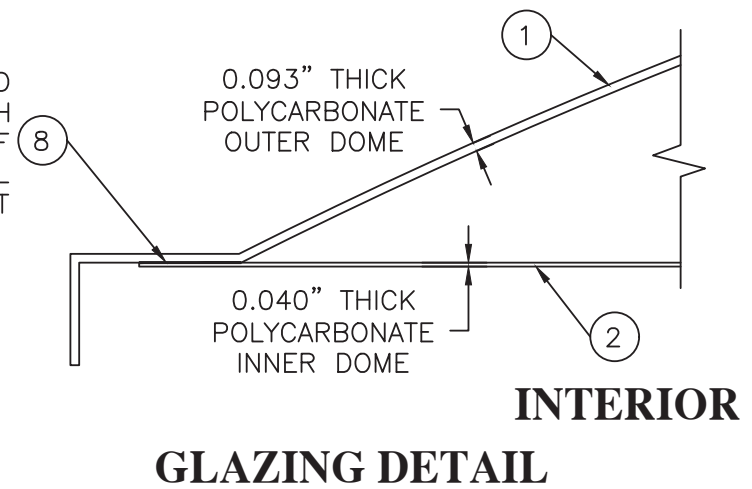
PHONE: 321.690.1789
FAX: 321.690.1789
EMAIL: info@nlps-corp.com

Robert J. Amoruso, P.E.
FL P.E. No. 49752



A **INSTALLATION CROSS SECTION**
4

INNER DOME IS SEALED TO OUTER DOME WITH A CONTINUOUS BEAD OF SILICONE SEALANT ALL THE WAY AROUND SKYLIGHT



PROJECT NUMBER:	423-0504		
Update to 8th Edition (2023) FBC	10/16/23 RJA		
Update to 6th Edition (2017) FBC	12/6/17 RJA		
Update to 5th Edition (2014) FBC	7/15/15 RJA		
REV	DESCRIPTION	DATE	BY
C			
B			
A			

NATURAL LIGHT ENERGY SYSTEMS, dba KENNEDY SKYLIGHTS
5294 TOWER WAY
SANFORD, FL 32773

TITLE: MODEL "CM" CURB MOUNTED POLYCARB. SKYLIGHT NON IMPACT
INSTALLATION CROSS SECTION AND GLAZING DETAIL

PREPARED BY: PTC PRODUCT DESIGN GROUP, LLC
LONGWOOD, FLORIDA 32752
FBPE C.A. NO. 2595

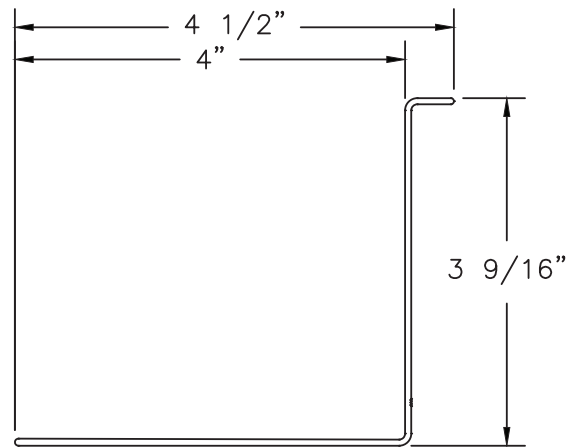
DATE: 05/08/12
DRAWN BY: TJH
SCALE: N.T.S.
REV: C

SHEET: 4 OF 5

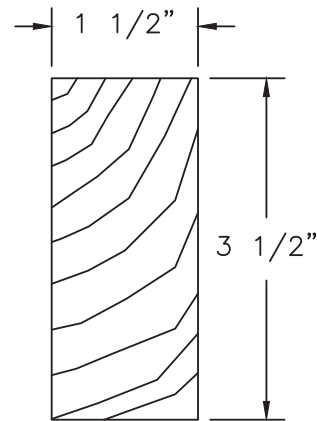
Robert J. Amoruso, P.E.
FL P.E. No. 49752

BILL OF MATERIALS

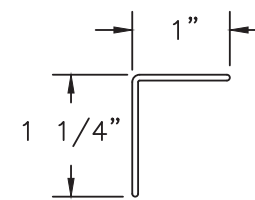
ITEM #	PART #	ITEM DESCRIPTION	MANUFACTURER	MATERIAL
1		0.093" POLYCARBONATE OUTER DOME (CURRENT NOA)	PALRAM AMERICAS, INC.	POLYCARBONATE
2		0.040" POLYCARBONATE INNER DOME (CURRENT NOA)	PALRAM AMERICAS, INC.	POLYCARBONATE
3	FE4700	4" CURB	INDALEX ALUM. SOLUTIONS	ALUM. 6063-T6
4		1 1/2" x 3 1/2" WOOD CURB FRAME	NATURAL LIGHT ENERGY SYSTEMS, dba KENNEDY SKYLIGHTS	WOOD
5		1" x 1 1/2" RING	INDALEX ALUM. SOLUTIONS	ALUM. 6063-T6
6		FOAM TAPE		FOAM
7		SILICONE SEALANT		SILICONE
8		RIGID SPACER FOR POLYCARB, DOME AND RING INSTALLATION, SEE INSTALLATION NOTE 4 SHEET 2		RIGID



③ **4" CURB**
EXTRUDED ALUMINUM 6063-T6
0.060" THICK



④ **2X WOOD CURB**
WOOD



⑤ **1" x 1 1/4" RING**
EXTRUDED ALUMINUM 6063-T6
0.060" THICK

PROJECT NUMBER: 423-0504
 NATURAL LIGHT ENERGY SYSTEMS, dba KENNEDY SKYLIGHTS
 5294 TOWER WAY
 SANFORD, FL 32773
 TITLE: MODEL "CM" CURB MOUNTED POLYCARB. SKYLIGHT NON IMPACT
 PREPARED BY: BILL OF MATERIALS AND COMPONENTS
 DRAWN BY: TJH
 DATE: 05/08/12
 SCALE: N.T.S.
 REV: C
 SHEET: 5 OF 5
 PTC PRODUCT DESIGN GROUP, LLC
 PO BOX 520776
 LONGWOOD, FLORIDA 32752
 FBPE CA. NO. 23535
 Phone: 321.690.1789
 Fax: 321.690.1789
 Email: info@ptc-corp.com

Robert J. Amoruso, P.E.
FL P.E. No. 49752

REV	DESCRIPTION	DATE	BY
C	Update to 8th Edition (2023) FBC	10/16/23	RJA
B	Update to 6th Edition (2017) FBC	12/6/17	RJA
A	Update to 5th Edition (2014) FBC	7/15/15	RJA